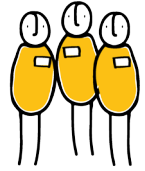


Practice Questions

The following questions are examples designed to support colleagues to explore and support practice.

These are in no way exhaustive.



Discovery Questions

- What assumptions do you hold about the family? About their potential?
- How would you describe this family's situation?
- What's important to them in their situation? What's challenging to you in this situation/scenario?
- What have you done to build on trust?
- What are the facts as you see them?
- What has been your main experience with this family?
- What has influenced your thinking?
- What would a significant breakthrough look like?
- How does the family see their situation?

Innovation Questions

- What challenge/opportunity would this idea address?
- How would you describe this family's situation?
- In the best of all possible worlds, what would you want for this family? What would they want for themselves?
- What questions would guide this situation to a new and positive outcome?
- What can you do to combine the best of your thinking?
- What can you do to build on others' ideas?
- What intrigues you about this idea?
- Where is this idea taking you?
- If there were no obstacles, what would you want to happen?

Version May.2018

